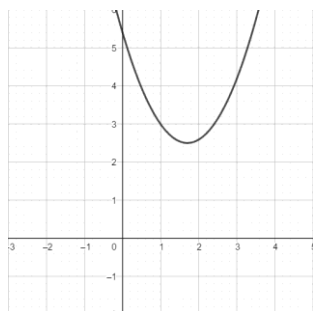
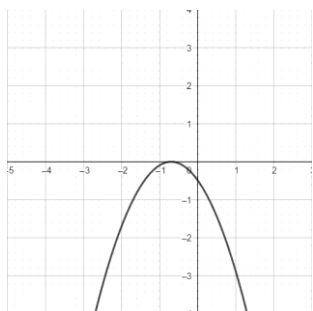


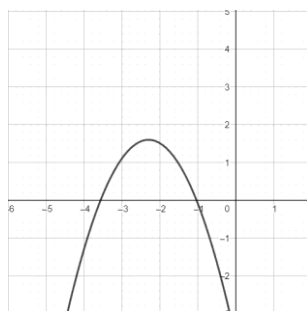
1. Zaokružiti slovo ispod parabole za koju vrijedi da je $a > 0$ i $D > 0$.



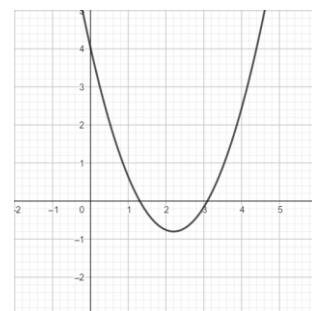
a)



b)



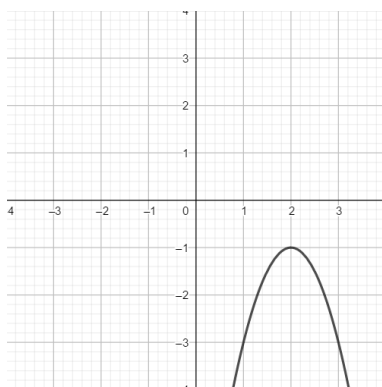
c)



d)

MK
/1

2. Kojoj od navedenih funkcija odgovara grafički prikaz na slici?



a) $f(x) = -2(x-2)^2 - 1$

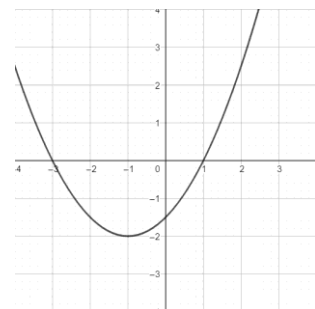
b) $f(x) = 2(x-2)^2 - 1$

c) $f(x) = 2(x-2)^2 + 1$

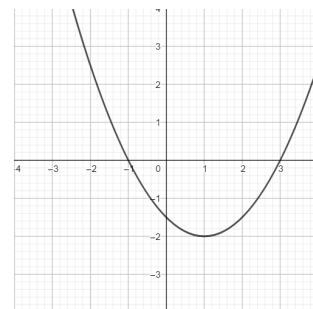
d) $f(x) = -2(x+2)^2 - 1$

MK
/1

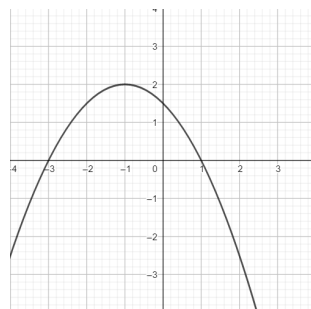
3. Zaokružiti slovo ispod parabole $y = \frac{1}{2}(x-3)(x+1)$.



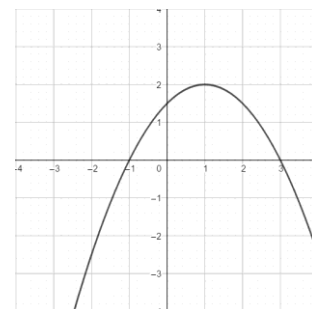
a)



b)



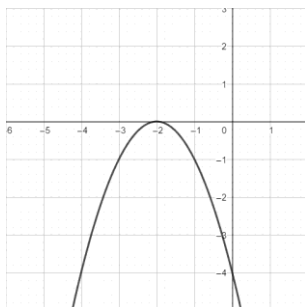
c)



d)

MK
/1

4. Koja od izjava vrijedi za kvadratnu funkciju prikazanu na slici?



a) Za -2 postiže minimum 0.

b) Za -2 postiže maksimum 0.

c) Za 0 postiže maksimum -2.

d) Za 0 postiže minimum -4.

MK
/1

5. Koliko iznosi vrijednost koeficijenta a u funkciji $f(x) = ax^2 + 4x + 2$ ako je $f(-1) = -5$?

MK
/1

Rješenje: _____

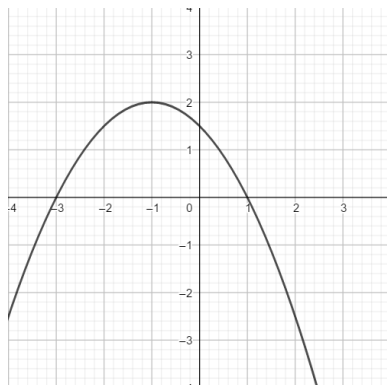
6. Odrediti os simetrije parabole kojoj su nul-točke brojevi -5 i 7 .

MK
/1

Rješenje: _____

7. Na kojem intervalu funkcija prikazana na slici pada?

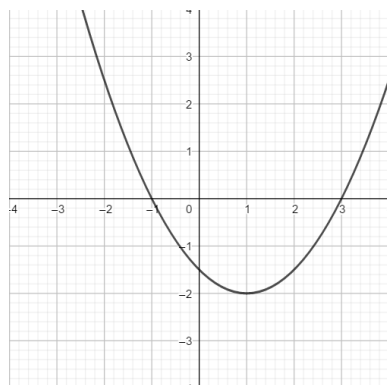
MK
/1



Rješenje: _____

8. Odrediti domenu i sliku funkcije čiji graf je prikazan na slici.

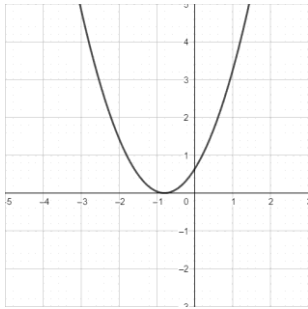
MK
/1



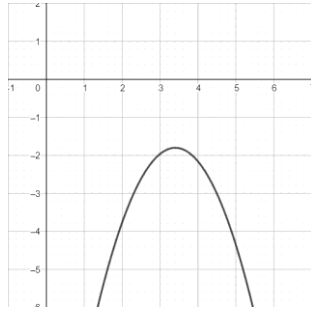
Rješenje: _____

1. Zaokružiti slovo ispod parabole za koju vrijedi da je $a < 0$ i $D < 0$.

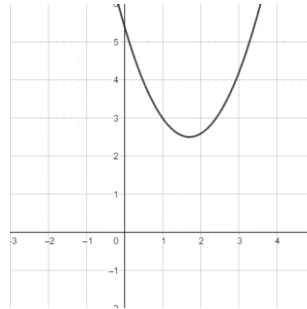
MK /1



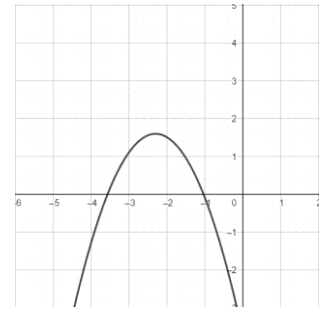
a)



b)



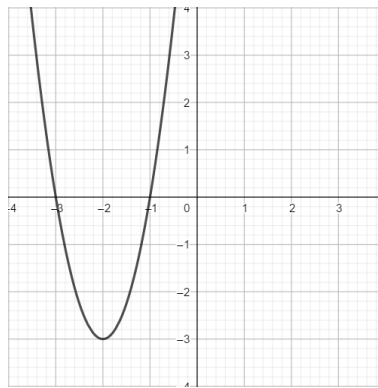
c)



d)

2. Kojoj od navedenih funkcija odgovara grafički prikaz na slici?

MK /1



a) $f(x) = -3(x + 2)^2 + 3$

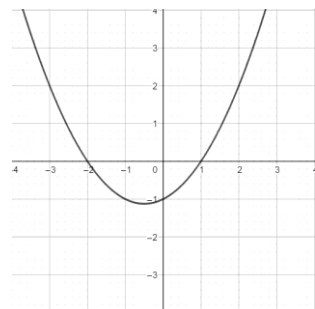
b) $f(x) = 3(x - 2)^2 - 3$

c) $f(x) = 3(x + 2)^2 - 3$

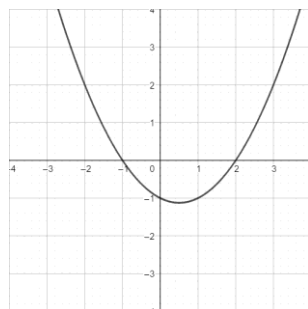
d) $f(x) = -3(x + 2)^2 - 3$

3. Zaokružiti slovo ispod parabole $y = -\frac{1}{2}(x - 2)(x + 1)$.

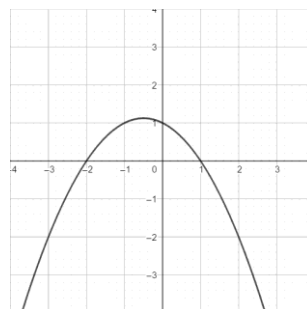
MK /1



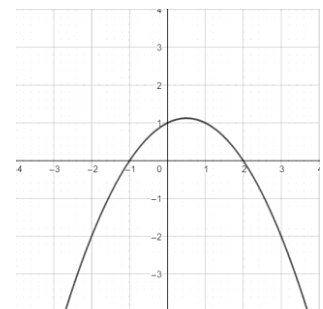
a)



b)



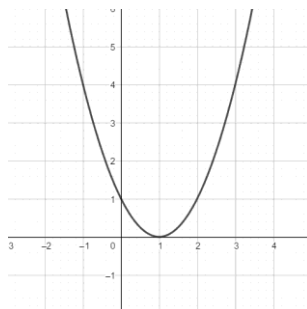
c)



d)

4. Koja od izjava vrijedi za kvadratnu funkciju prikazanu na slici?

MK /1



a) Za 0 postiže minimum 1.

b) Za 1 postiže maksimum 0.

c) Za 1 postiže minimum 0.

d) Za 0 postiže maksimum 1.

5. Koliko iznosi vrijednost koeficijenta b u funkciji $f(x) = -3x^2 + bx + 2$ ako je $f(2) = -2$?

MK
/1

Rješenje: _____

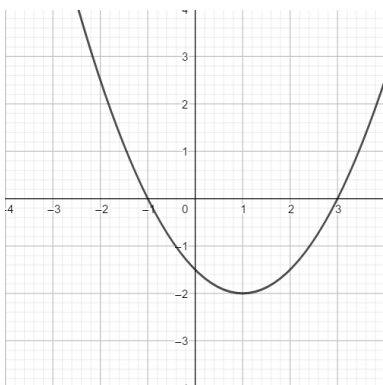
6. Odrediti os simetrije parabole kojoj su nul-točke brojevi -8 i 2 .

MK
/1

Rješenje: _____

7. Na kojem intervalu funkcija prikazana na slici raste?

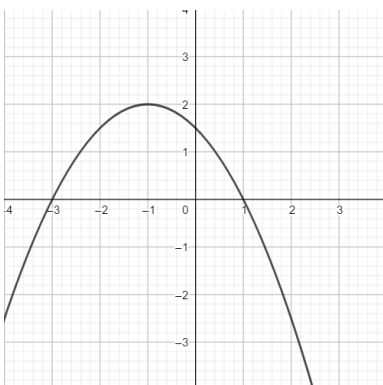
MK
/1



Rješenje: _____

8. Odrediti domenu i sliku funkcije čiji graf je prikazan na slici.

MK
/1



Rješenje: _____