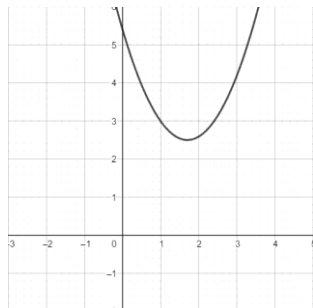
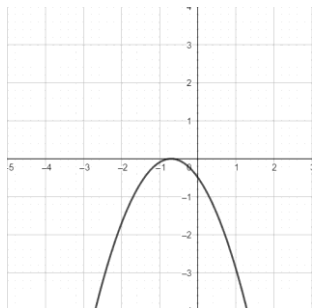


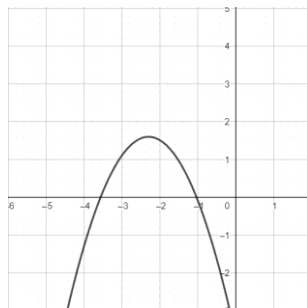
1. Zaokružiti slovo ispod parabole za koju vrijedi da je $a < 0$ i $D > 0$.



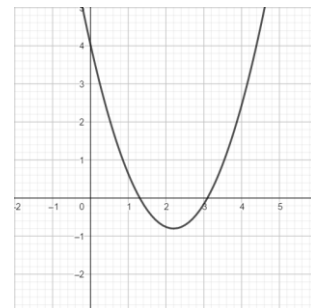
a)



b)



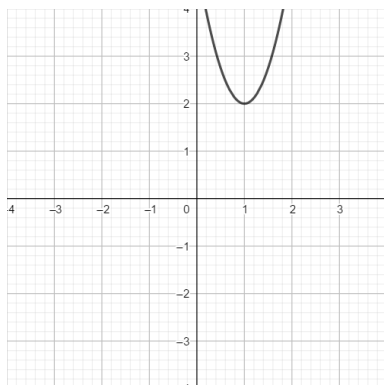
c)



d)

MK
/1

2. Kojoj od navedenih funkcija odgovara grafički prikaz na slici?



a) $f(x) = 3(x-1)^2 + 2$

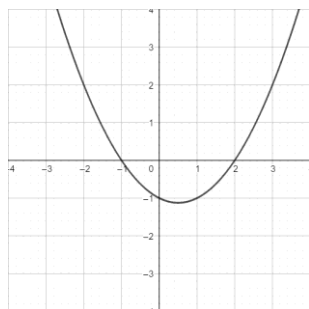
b) $f(x) = -3(x-1)^2 - 2$

c) $f(x) = -3(x-1)^2 + 2$

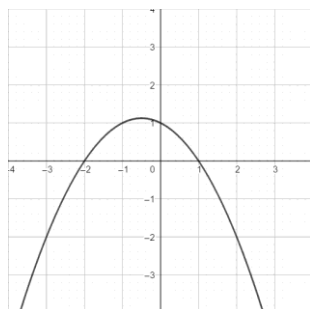
d) $f(x) = 3(x+1)^2 + 2$

MK
/1

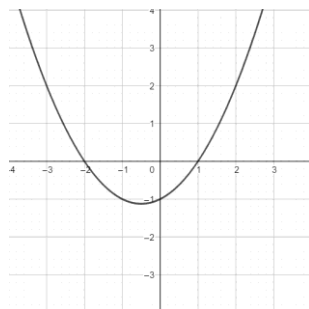
3. Zaokružiti slovo ispod parabole $y = -\frac{1}{2}(x-1)(x+2)$.



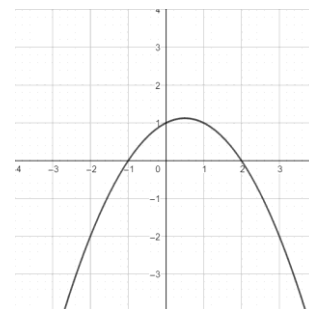
a)



b)



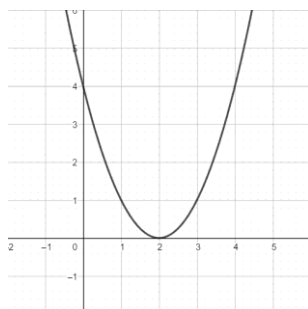
c)



d)

MK
/1

4. Koja od izjava vrijedi za kvadratnu funkciju prikazanu na slici?



a) Za 2 postiže maksimum 0.

b) Za 0 postiže minimum 2.

c) Za 2 postiže minimum 0.

d) Za 0 postiže maksimum 4.

MK
/1

5. Koliko iznosi vrijednost koeficijenta c u funkciji $f(x) = -3x^2 + 4x + c$ ako je $f(-1) = -5$?

MK
/1

Rješenje: _____

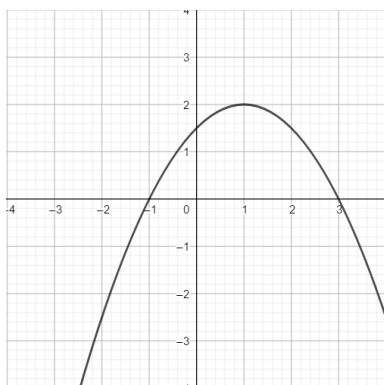
6. Odrediti os simetrije parabole kojoj su nul-točke brojevi -6 i 4 .

MK
/1

Rješenje: _____

7. Na kojem intervalu funkcija prikazana na slici raste?

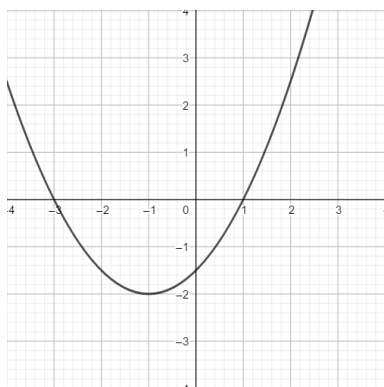
MK
/1



Rješenje: _____

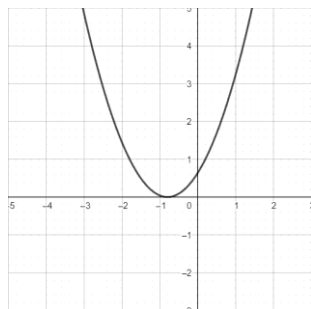
8. Odrediti domenu i sliku funkcije čiji graf je prikazan na slici.

MK
/1

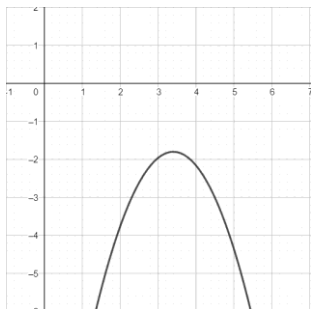


Rješenje: _____

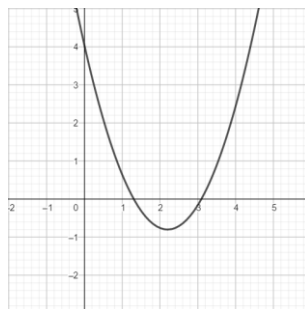
1. Zaokružiti slovo ispod parabole za koju vrijedi da je $a > 0$ i $D = 0$.



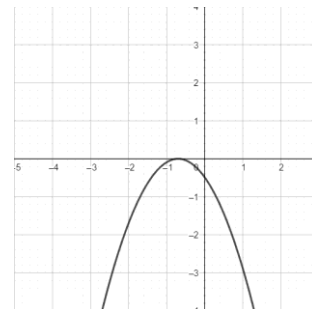
a)



b)



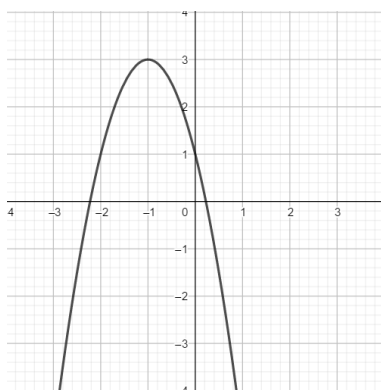
c)



d)

MK
/1

2. Kojoj od navedenih funkcija odgovara grafički prikaz na slici?



a) $f(x) = 2(x+1)^2 + 3$

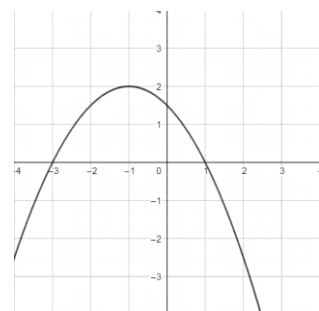
b) $f(x) = 2(x+1)^2 - 3$

c) $f(x) = -2(x+1)^2 + 3$

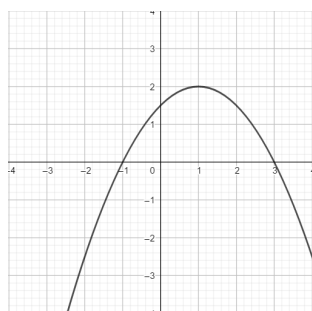
d) $f(x) = -2(x-1)^2 + 3$

MK
/1

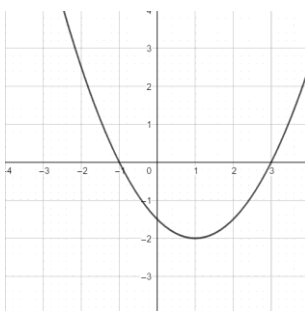
3. Zaokružiti slovo ispod parabole $y = \frac{1}{2}(x-1)(x+3)$.



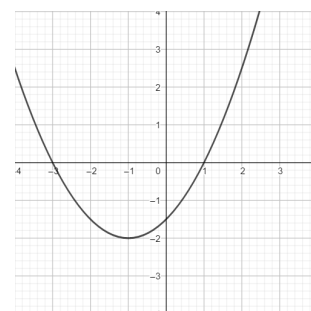
a)



b)



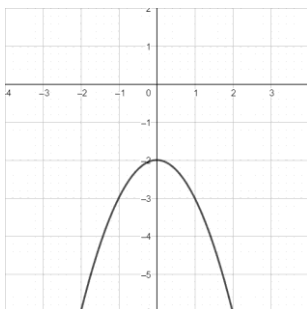
c)



d)

MK
/1

4. Koja od izjava vrijedi za kvadratnu funkciju prikazanu na slici?



a) Za -2 postiže minimum 0.

b) Za -2 postiže maksimum 0.

c) Za 0 postiže minimum -2.

d) Za 0 postiže maksimum -2.

MK
/1

5. Koliko iznosi vrijednost koeficijenta a u funkciji $f(x) = ax^2 + 4x + 2$ ako je $f(2) = -2$?

MK
/1

Rješenje: _____

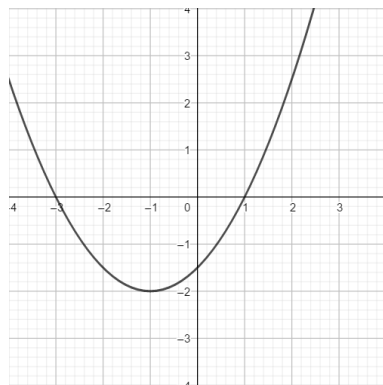
6. Odrediti os simetrije parabole kojoj su nul-točke brojevi -2 i 6 .

MK
/1

Rješenje: _____

7. Na kojem intervalu funkcija prikazana na slici pada?

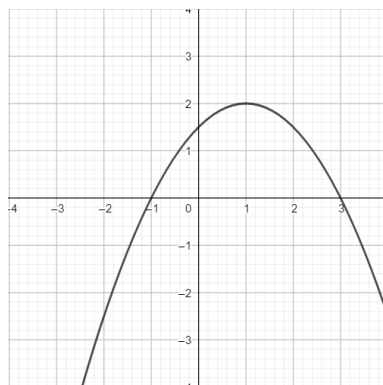
MK
/1



Rješenje: _____

8. Odrediti domenu i sliku funkcije čiji graf je prikazan na slici.

MK
/1



Rješenje: _____