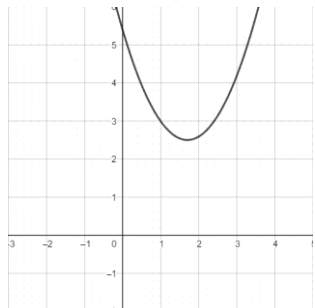
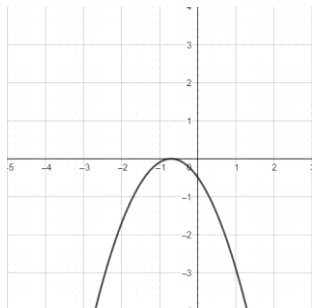


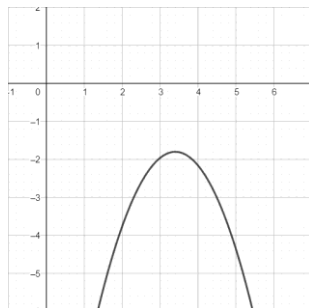
1. Zaokružiti slovo ispod parabole za koju vrijedi da je  $a > 0$  i  $D < 0$ .



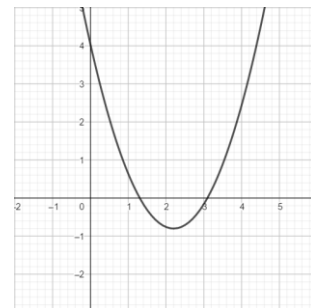
a)



b)



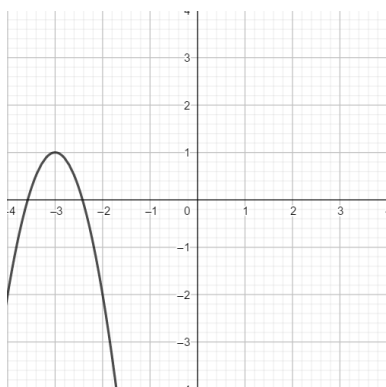
c)



d)

MK  
/1

2. Kojoj od navedenih funkcija odgovara grafički prikaz na slici?



a)  $f(x) = 3(x + 3)^2 - 1$

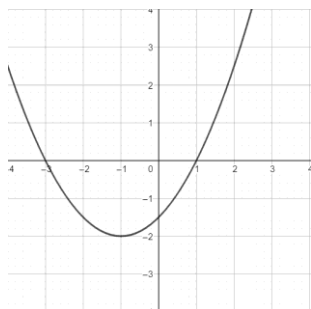
b)  $f(x) = -3(x + 3)^2 + 1$

c)  $f(x) = -3(x - 3)^2 + 1$

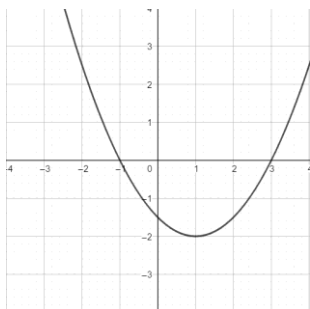
d)  $f(x) = 3(x + 3)^2 + 1$

MK  
/1

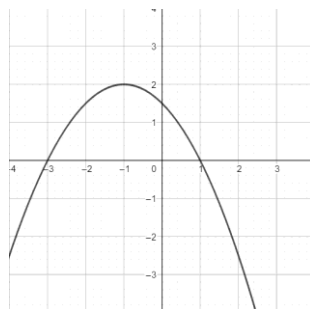
3. Zaokružiti slovo ispod parabole  $y = -\frac{1}{2}(x - 3)(x + 1)$ .



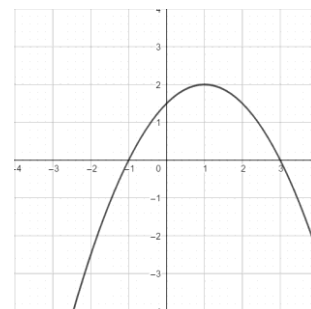
a)



b)



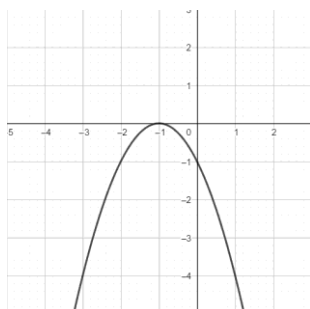
c)



d)

MK  
/1

4. Koja od izjava vrijedi za kvadratnu funkciju prikazanu na slici?



a) Za -1 postiže minimum 0.

b) Za -1 postiže maksimum 0.

c) Za 0 postiže minimum -1.

d) Za 0 postiže maksimum -1.

MK  
/1

5. Koliko iznosi vrijednost koeficijenta  $b$  u funkciji  $f(x) = -3x^2 + bx + 2$  ako je  $f(-1) = -5$  ?

MK  
/1

Rješenje: \_\_\_\_\_

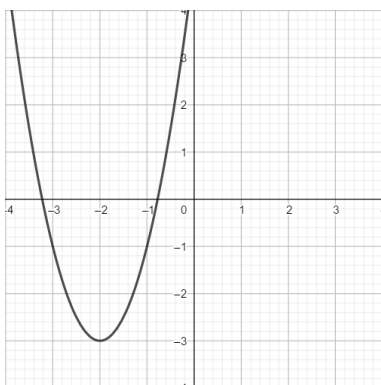
6. Odrediti os simetrije parabole kojoj su nul-točke brojevi  $-1$  i  $7$ .

MK  
/1

Rješenje: \_\_\_\_\_

7. Na kojem intervalu funkcija prikazana na slici raste?

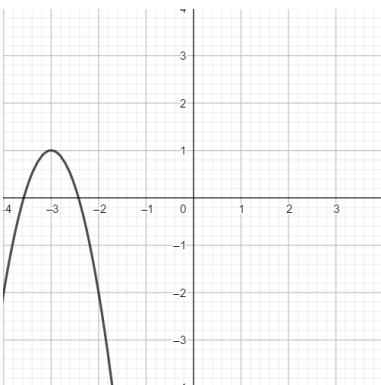
MK  
/1



Rješenje: \_\_\_\_\_

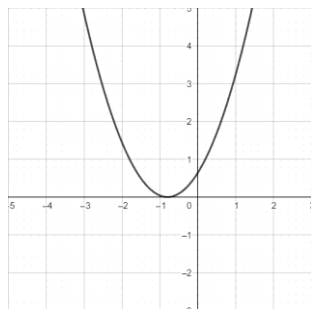
8. Odrediti domenu i sliku funkcije čiji graf je prikazan na slici.

MK  
/1

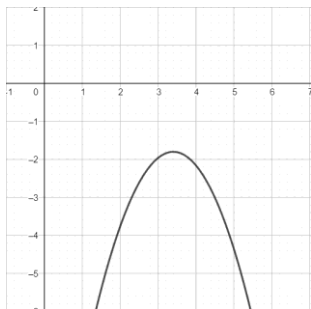


Rješenje: \_\_\_\_\_

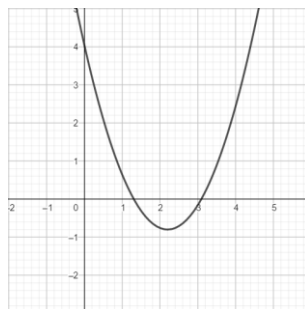
1. Zaokružiti slovo ispod parabole za koju vrijedi da je  $a < 0$  i  $D = 0$ .



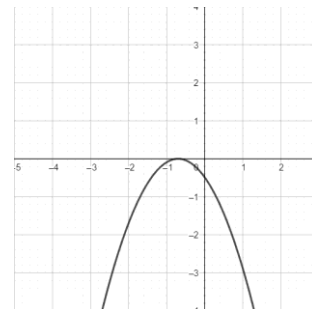
a)



b)



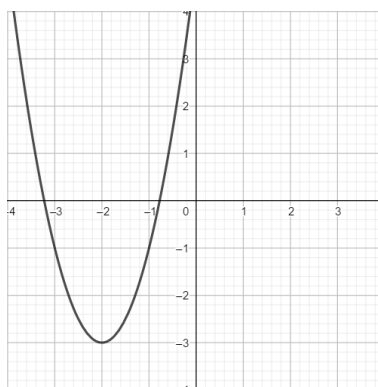
c)



d)

MK  
/1

2. Kojoj od navedenih funkcija odgovara grafički prikaz na slici?



a)  $f(x) = -2(x+2)^2 + 3$

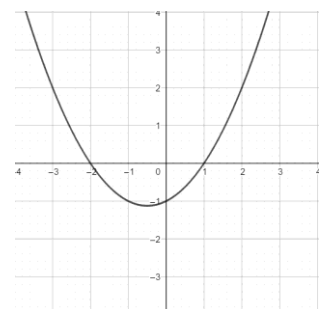
b)  $f(x) = -2(x+2)^2 - 3$

c)  $f(x) = 2(x+2)^2 - 3$

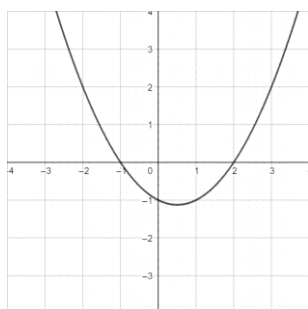
d)  $f(x) = 2(x-2)^2 - 3$

MK  
/1

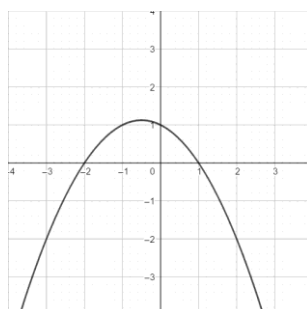
3. Zaokružiti slovo ispod parabole  $y = \frac{1}{2}(x-2)(x+1)$ .



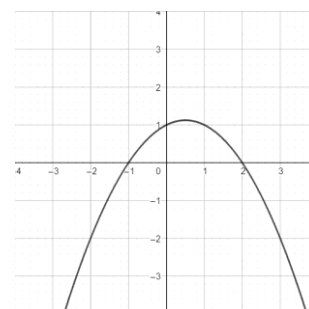
a)



b)



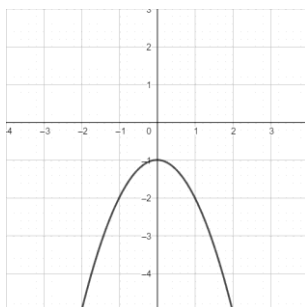
c)



d)

MK  
/1

4. Koja od izjava vrijedi za kvadratnu funkciju prikazanu na slici?



a) Za -1 postiže maksimum 0.

b) Za -1 postiže minimum 0.

c) Za 0 postiže maksimum -1.

d) Za 0 postiže minimum -1.

MK  
/1

5. Koliko iznosi vrijednost koeficijenta  $c$  u funkciji  $f(x) = -3x^2 + 4x + c$  ako je  $f(2) = -2$ ?

MK  
/1

Rješenje: \_\_\_\_\_

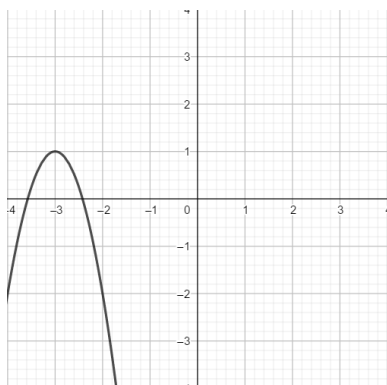
6. Odrediti os simetrije parabole kojoj su nul-točke brojevi  $-7$  i  $3$ .

MK  
/1

Rješenje: \_\_\_\_\_

7. Na kojem intervalu funkcija prikazana na slici pada?

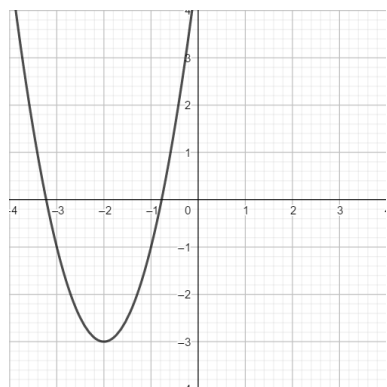
MK  
/1



Rješenje: \_\_\_\_\_

8. Odrediti domenu i sliku funkcije čiji graf je prikazan na slici.

MK  
/1



Rješenje: \_\_\_\_\_